



PCM

**£2,600 PCM**

**Sebert Road**

London, E7 0NQ



Located opposite Forest Gate Station is this exceptional split level 3 double bedroom, 2 bathroom apartment.

The property features a street entrance leading up to the 1st floor which features a modern fitted kitchen, contemporary bathroom with bath plus shower attachment, 2nd shower room with additional W/c, double bedroom and a large reception room facing the front of the building.

The top floor features 2 further bedrooms, both carpeted and which has a exposed brick chimney breast.

The property is located opposite Forest Gate Overground Station giving easy access to Stratford and the City with Wanstead Park Station Close by. Westfields Shopping Center and the Olympic Village is with a easy commute as well as the open spaces of Wanstead Flats being close by.

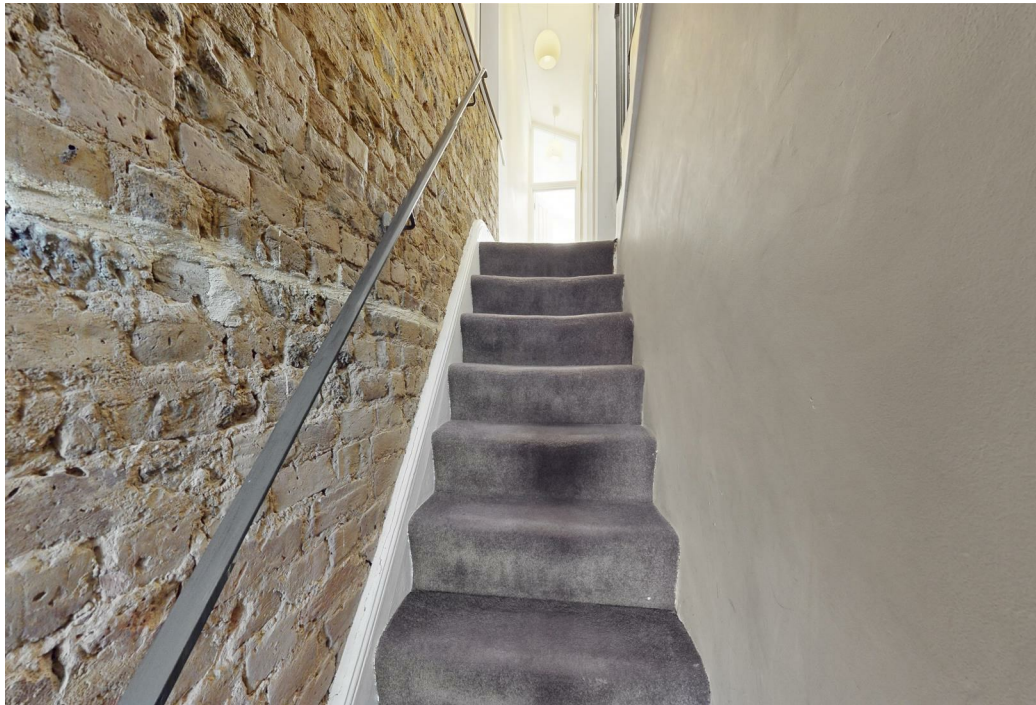
Unfurnished

Council Tax: Band C

5 Weeks Deposit: £3000

12 Month Contract: Breakclause Subject To Offer

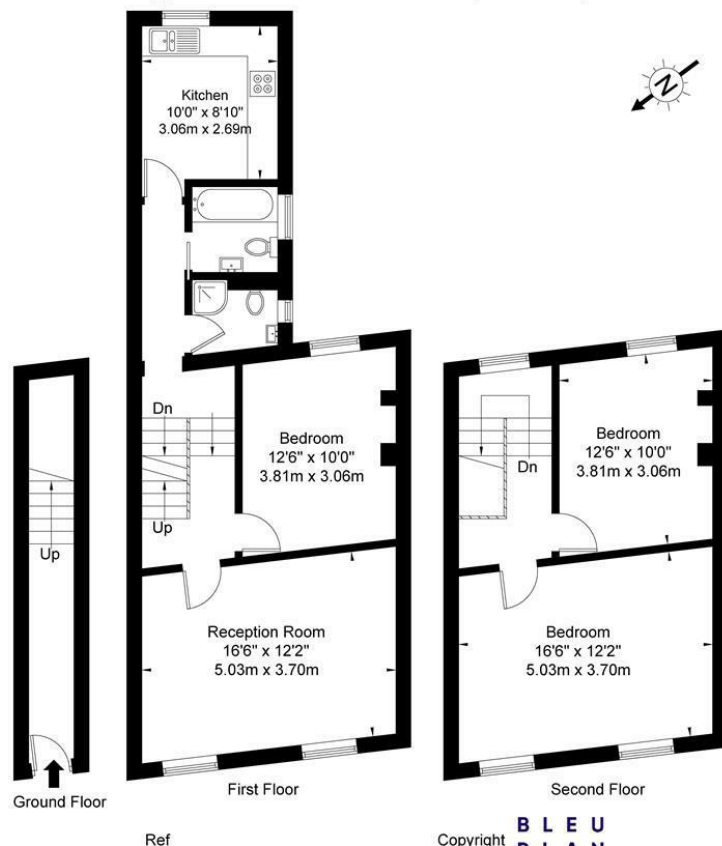




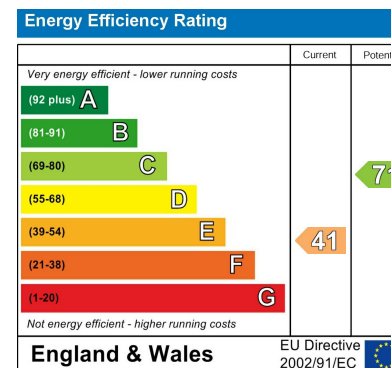


# Sebert Road, E7 0NQ

Approx. Gross Internal Area = 103.0 sq m / 1109 sq ft



The Floor plan is not to scale and measurements and areas shown are approximate and therefore should be used for illustrative purposes only. The plan has been prepared in accordance with the RICS code of Measuring Practice and whilst we have confidence in the information produced it must not be relied on. If there is any aspect of particular importance, you should carry out or commission your own inspection of the property.  
Copyright @ BLEUPLAN



Agents Note: Whilst every care has been taken to prepare these particulars, they are for guidance purposes only. All measurements are approximate and are for general guidance purposes only and whilst every care has been taken to ensure their accuracy, they should not be relied upon and potential buyers/tenants are advised to recheck the measurements

**OFFICE ADDRESS**  
88 Cheshire Street  
London  
E2 6EH

**OFFICE DETAILS**  
0207 739 6969  
info@peachproperties.com  
www.peachproperties.com